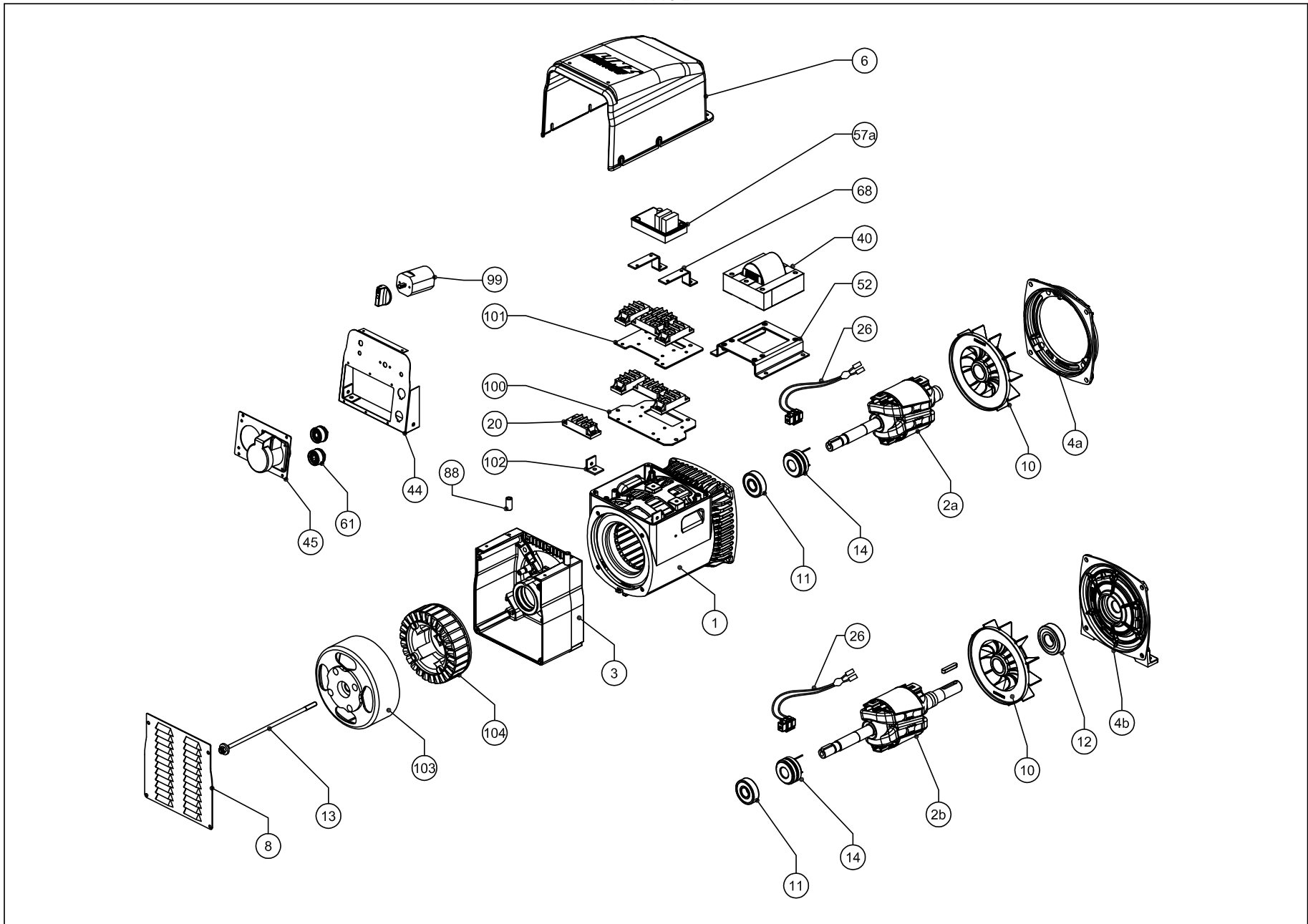


HFW10 B



| no. | CODICE CODE | DESCRIZIONE | DESCRIPTION | DESCRIPTION | DESCRIPTION | € |
|-----|-----------------|------------------------------------|-------------------------------|-------------------------------------|----------------------------------|-------|
| 1 | * | CARCASSA CON STATORE HFW10 B | FRAME WITH STATOR HFW10 B | CARCAZA CON ESTATOR HFW10 B | CARCASSE AVEC STATOR HFW10 B | 186,0 |
| 2 | * | ROTORE FINITO HFW10 B J609b | ROTATING INDUCTOR HFW10 B | IND. ROTANTE HFW10 B | RUE POL. HFW10 B | 162,0 |
| 2 | * | ROTORE FINITO HFW10 B B14 | ROTATING INDUCTOR HFW10 B | IND. ROTANTE HFW10 B | RUE POL. HFW10 B | 174,0 |
| 3 | E10SE009C | SCUDO POSTERIORE B3/B9 | B3/B9 REAR SHIELD | ESCUDO POSTERIOR B3/B9 | FLASQUE ARRIERE B3/B9 | 22,0 |
| 4a | E10SB003B | SCUDO ANTERIORE d.105 C23-C30 | d.105 C.23 - C30 FRONT SHIELD | ESCUDO ANTERIOR d.105 C.23 - C30 | FLASQUE AVANT d.105 C.23-C30 | 9,1 |
| 4a | E10SB005B | SCUDO ANTERIORE d.146 J609b | d.146 J609B FRONT SHIELD | ESCUDO ANTERIOR d.146 J609B | FLASQUE AVANT d.146 J609B | 8,4 |
| 4a | E10SB009B | SCUDO ANTERIORE d.41.25 J609a | d.41.25 J609A FRONT SHIELD | ESCUDO ANTERIOR d.41.25 J609A | FLASQUE AVANT d.41.25 J609A | 12,3 |
| 4b | E10SB001B | SCUDO ANTERIORE B3/B14 | B3/B14 FRONT SHIELD | ESCUDO ANTERIOR B3/B14 | FLASQUE AVANT B3/B14 | 18,0 |
| 6 | E10BT126D | SCATOLA BASETTA | TERMINAL BOX | TAPA SUPERIOR | COUVERCLE SUPERIEUR | 9,6 |
| 8 | E10KA143B | PROTEZIONE POSTERIORE | REAR PROTECTION | PROTECCION POSTERIOR | COFFRET ARRIERE | 19,0 |
| 10 | E10VE000B | VENTOLA | FAN | VENTILADOR | VENTILATEUR | 4,1 |
| 11 | EX411465320 | CUSCINETTO POSTERIORE | REAR BEARING | COJINETE POSTERIOR | ROULEMENT ARRIERE | 4,7 |
| 12 | EX411465325 | CUSCINETTO ANTERIORE | FRONT BEARING | COJINETE ANTERIOR | ROULEMENT AVANT | 8,5 |
| 13 | E10TK021A | TIRANTE CENTRALE + DADO + RONDELLA | TIE ROD + NUT + WHASER | VARILLA CENTRAL + ARENDELA + TUERCA | TIRANT CENTRAL + RONDELLE + TIGE | 3,6 |
| 14 | E10KA151A | COLLETORE A 2 ANELLI | SLIP RING | COLECTOR DE ANILLOS | COLLECTEUR A DEUX BAGUES | 14,4 |
| 20 | EX541320000 | PONTE A DIODI TRIFASE | THREEPHASE DIODE BRIDGE | PUENTE DIODO TRIFASICO | PONT REDRESSEUR TRIPHASE | 28,8 |
| 26 | E10KA186A | PORTASPAZZOLE COMPLETO | COMPLETE BRUSH HOLDER | PORTAESCOBILLAS COMPLETO | PORTE-BALAIS COMPLET | 16,0 |
| 40 | E10KA158B | INDUTTANZA SALDATRICE | INDUCTANCE | INDUCTOR | INDUCTANCE | 86,0 |
| 44 | E10BT124CS5 | PANNELLO CONTROLLO | CONTROL PANEL | PANEL DE CONTROL | TABLEAU DE CONTROLE | 30,4 |
| 45 | E10BT153A | PANNELLO PRESE | SOCKETS PANEL | PANEL DE TOMAS | TABLEAU PRISES | 9,0 |
| 52 | E10BT122B | PIASTRA COMPOUND | COMPOUND SUPPORT | COMPOUND SOPORTE | PLAQUE COMPOUND | 22,0 |
| 57a | E13EX005A/R | REGOLATORE HVR10 | HVR10 REGULATOR | REGULADOR HVR10 | REGULATEUR HVR10 | 116,0 |
| 61 | EYPRSDIN60229RD | PRESA DINSE | FEMALE WELDING TERMINAL | BORNE HEMBRA DE SOLDADURA | PRISE DINSE | 4,0 |
| 68 | E10KA144A | SUPPORTO REGOLATORE | SUPPORT | SOPORTE | SUPPORT | 7,0 |
| 88 | E00ZF327A | DISTANZIALE CILINDRICO | SPACER | ARANDELA DE SEPARACION | RONDELLE D'EPaisseur | 1,6 |
| 99 | EX592201000 | COMMUTATORE 7 POSIZIONI | 7 POS. SWITCH | CONMUTADOR 7 POS. | COMMUTATEUR 7 POS. | 18,0 |
| 100 | E10BT121B | PIASTRA INFERIORE DIODI | BOTTOM PLATE DIODES | PLACA INFERIOR DIODOS | PLAQUE INFERIOR DIODE | 46,0 |
| 101 | E10BT142A | PIASTRA SUPERIORE DIODI | UPPER PLATE DIODES | PLACA SUPERIOR DIODOS | PLAQUE SUPERIOR DIODE | 36,0 |
| 102 | E10BT125A | STAFFA ANGOLARE | BRACKET | SOPORTE | SUPPORT | 3,4 |
| 103 | E10KA153A | ROTORE MAGNETI PERMANENTI | ROTOR PMG | ROTOR PMG | ROTOR PMG | 166,0 |
| 104 | E10KA160B | STATORE SALDATRICE | WELDING STATOR | ESTATOR DE SOLDADORA | STATOR DE SOUDEUSE | 396,0 |

* Specificare codice dell'alternatore e data di produzione

* Specify alternator's code and date of production

* Precisar código del alternador y fecha de production

* Specifier code alternateur et date de production

